

# Access

Approx. **80** minutes by bus from **Haneda Airport**  
 Approx. **115** minutes by bus from **Narita Airport**  
 Approx. **60** minutes by train or car from **central Tokyo**



## Hotels

Multiple hotels providing a range of facilities and services, including Wi-Fi, are available in central Kawagoe City near to train stations and sightseeing spots.

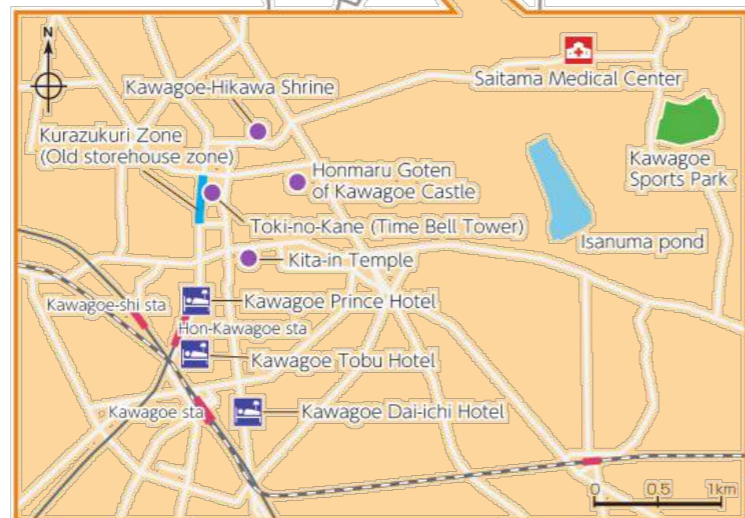


Kawagoe Prince Hotel   Kawagoe Tobu Hotel   Kawagoe Dai-ichi Hotel

## Hospital Saitama Medical Center



Designated as an advanced emergency medical service center, this hospital fulfills its function as a university hospital while also acting as a key hospital for the local region.



# Places to See in Kawagoe



Kawagoe City has numerous historical and cultural properties to see and experience: Kurazukuri Zone (Old storehouse zone), where the streets are lined with traditional storehouses; Toki-no-Kane (Time Bell Tower), which has been telling time for the people of Kawagoe for 400 years; Honmaru Goten of Kawagoe Castle, which is the symbol of Kawagoe's old castle town; Buddhist temples and Shinto shrines, such as Kita-in Temple and Kawagoe-Hikawa Shrine; and the Kawagoe Festival, which features parades of gorgeous floats and contests between the musicians on the floats trying to outperform one another whenever the floats come together at intersections. With such a variety of attractions to enjoy, please come and visit Kawagoe!

# KAWAGOE

Training Camp Guide



## Kawagoe City Olympic Games Office

1-3-1 Moto-machi, Kawagoe City, Saitama Prefecture 350-8601 Japan  
 Tel: +81-49-224-6315 (direct line)   E-mail: gorin@city.kawagoe.saitama.jp   WEB: <http://www.city.kawagoe.saitama.jp>



Kawagoe City is located approx. 30 km from central Tokyo in virtually the center of Saitama Prefecture. The central city area brings together commercial and sightseeing facilities, while the suburbs present a wide-sweeping rural landscape, creating a city with balanced urban functions that is one of Saitama's representative cities. Within the central city area are numerous historical and cultural properties, such as streets lined with traditional storehouses. Retaining the vestiges of the days when Tokyo was known as "Edo", this historical district is called "Koedo" ("Little Edo") and is visited every year by some seven million tourists from around Japan and overseas. As an important transportation hub for railways and expressways, etc., Kawagoe City also has excellent access from major airports and central Tokyo. Moreover, the city provides an optimum environment for training camps with the Kawagoe Sports Park—providing athletics field, general gymnasiums, and various other sporting facilities—located in close proximity to accommodation facilities and healthcare institutions. Kawagoe is to be the venue for the golf event at the Tokyo 2020 Olympic Games, and opportunities for citizens to participate in Olympic preparations are increasing. We are very much looking forward to welcoming you to Kawagoe!

Mayor of Kawagoe City

*Goshiaki Kawai*

## Tokyo 2020 Olympic Games (Golf)

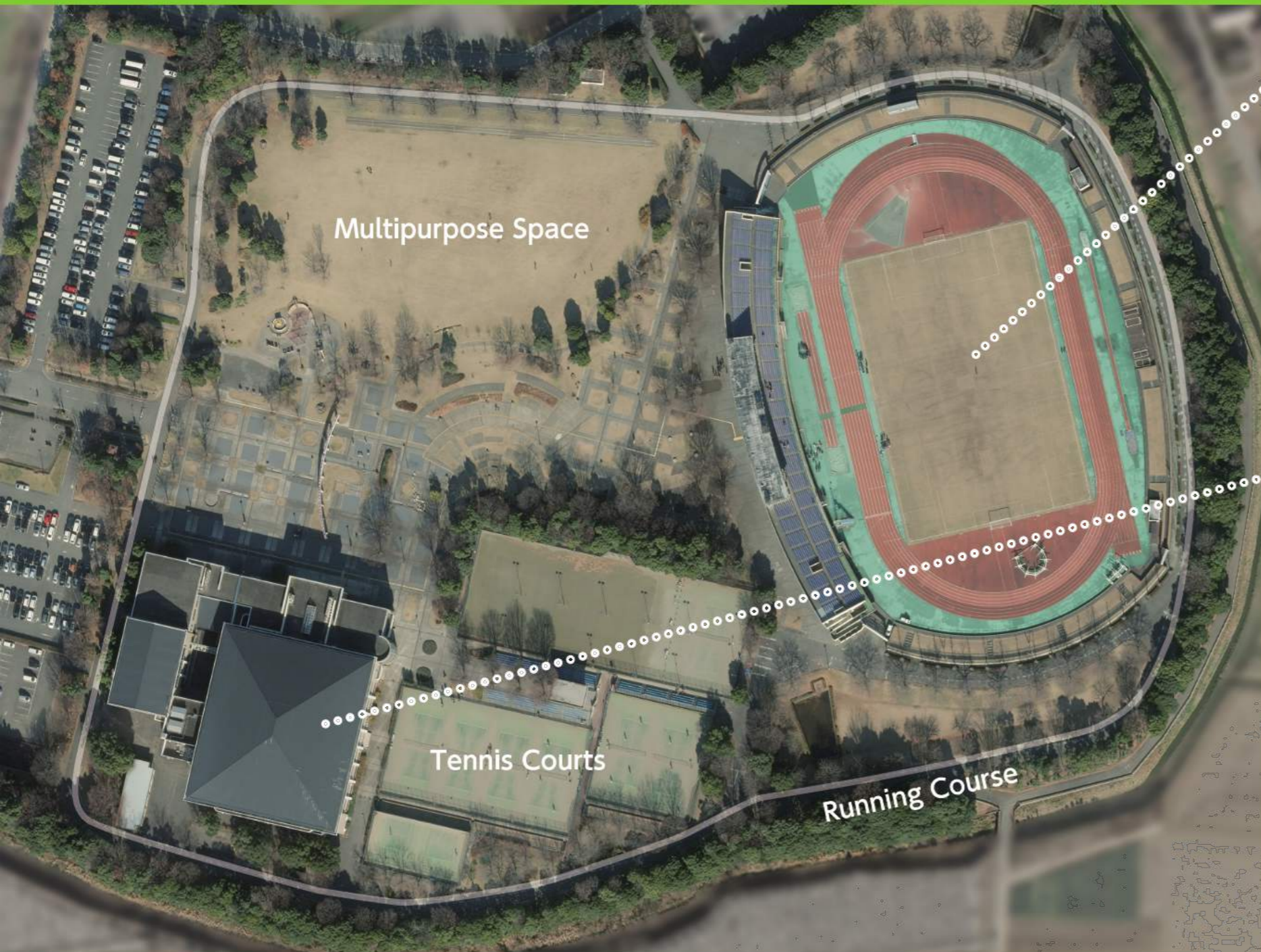


### Kasumigaseki Country Club

Opened in 1929, Kasumigaseki Country Club hosted the Canada Cup (now known as the World Cup) in 1957. Since then, the club has hosted various major Japanese golf tournaments, including the Japan Open Golf Championship and the Japan Women's Open Golf Championship. Furthermore, the Kasumigaseki Country Club has been the stage for the Japan Junior Golf Championship every year since 1971, with numerous professional golfers honing their skills in fierce contests at this club before taking on the world stage. The club also actively cooperates in community activities, providing facilities for civic golf tournaments for general golfers, as well as work experience for local junior high school students.

## Kawagoe Sports Park

Located amidst rich green natural surroundings in eastern Kawagoe, Kawagoe Sports Park provides a quiet environment that is optimal for sporting activities. A range of sporting events are held year-round, and the park is also used by local Kawagoe residents for their everyday sporting activities.



## Athletics Stadium (track and field, soccer, other sports)



The athletics stadium has a 400 m track with 8 lanes and can be used for jumping or throwing events as well. The natural grass field can also be used as a soccer field.



[Track] Authorized as a Category 2 Athletics Stadium by the Japan Association of Athletics Federations // 400 m x 8 lanes // All-weather urethane surface  
 [Field] Natural grass // Area: 7,420 m<sup>2</sup> (106 m x 70 m)  
 [Other] Indoor track // Men's and women's changing rooms // Meeting rooms // Medical office

## General Gymnasium (basketball, volleyball, handball, badminton, table tennis, other sports)



The general gymnasium is used by top Japanese basketball and volleyball teams, as well as top teams in other sports as a venue for games/matches and championships.



[Main Arena] Area: 2537.45 m<sup>2</sup> // Height: 16.0 m  
 (2 basketball courts, 3 volleyball courts, 1 handball court, 10 badminton courts, 20 table tennis courts)  
 [Sub Arena] Area: 631.65 m<sup>2</sup>  
 (1 basketball court, 1 volleyball court, 3 badminton courts, 10 table tennis courts)  
 [Other] Martial Arts Gym (Judo hall, Kendo hall) // Training room // Men's and women's changing rooms // Meeting rooms // Medical office

## Other Facilities



[Tennis Courts]  
 Artificial grass (contains sand)  
 12 courts (outside)



[Multipurpose Space]  
 Natural grass



[Running Course]  
 Approx. 1,200 m